

## UPDATE TO URGENT FIELD SAFETY NOTICE

### MiniMed™ 600 and 700 series insulin pump Battery Cap

#### Notification

Insulin Pump	Model Number
MiniMed™ 640G Insulin Pump	MMT-1711, MMT-1712, MMT-1751, MMT-1752
MiniMed™ 670G Insulin Pump	MMT-1761, MMT-1762, MMT-1781, MMT-1782
MiniMed™ 720G Insulin Pump	MMT-1809, MMT-1810, MMT-1859, MMT-1860
MiniMed™ 740G Insulin Pump	MMT-1811, MMT-1812, MMT-1861, MMT-1862
MiniMed™ 770G Insulin Pump	MMT-1881, MMT-1882, MMT-1891, MMT-1892
MiniMed™ 780G Insulin Pump	MMT, 1885, MMT-1886, MMT-1895, MMT-1896

July 2024

Medtronic Reference: FA1249

Manufacturer Single Registration Number (SRN): US-MF-000023100

Dear Pump User,

We've previously reached out to you about a potential issue with the battery cap on the MiniMed™ 600 series and MiniMed™ 700 series insulin pumps and provided actions you should take. We are pleased to inform you that we have developed a new battery cap for these specific pumps, which addresses the potential issues with the previous battery cap (model ACC-1527). We have included the new battery cap (model ACC-1529) for use with your previous case insulin pump with this letter. Thanks for your patience as we work to continuously improve your experience, your safety is our top priority.

#### Pump Cases:

Separately from the new design of the battery cap, Medtronic has also changed the design of the outer case on some MiniMed™ 700 series insulin pumps. The outer case of MiniMed™ 600 series insulin pumps has not changed.

**Pumps impacted by this battery cap contact issue have the previous case design. Each case has a unique battery cap, these replacement battery caps are only compatible with this previous case design.** The actions section below lists steps to identify the case on your insulin pump and the compatible battery cap.

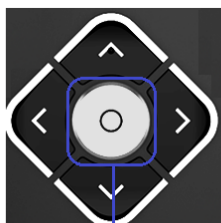
# Medtronic

**Our records indicate that you currently have a MiniMed™ 700 Series insulin pump with the modified outer case design, so you do **not** need to receive the new ACC-1529 battery cap model. Still, we would appreciate if you could identify your pump case and its compatible cap.**

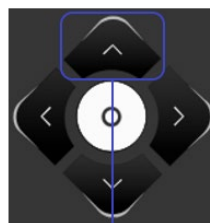
## Actions:

If you have a MiniMed™ 700 Series pump, we provide the below instructions to identify if your insulin pump has the previous case or the new case. We remind you that if you have a MiniMed™ 600 series pump, the pump has the previous case design only.

1. To identify if you have a new pump case on your MiniMed™ 700 series pump, navigate to **Menu** by clicking the 'Select' or Up" button.

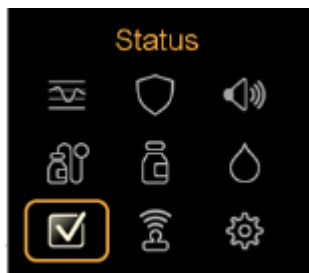


MiniMed™ 780G



MiniMed™ 770G, MiniMed™ 740G, MiniMed™ 720G,  
MiniMed™ 700

2. On the Menu screen select **Status**. On MiniMed™ 780G insulin pumps this will be the icon in the bottom left corner.

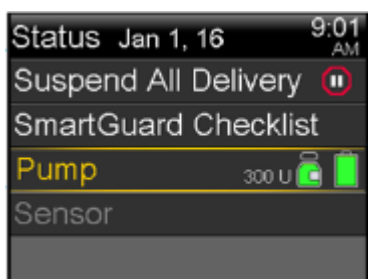


MiniMed™ 780G

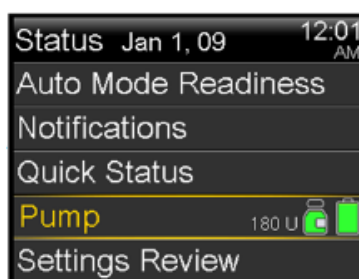


MiniMed™ 770G, MiniMed™ 740G, MiniMed™ 720G,  
MiniMed™ 700

3. On the Status screen select **Pump**

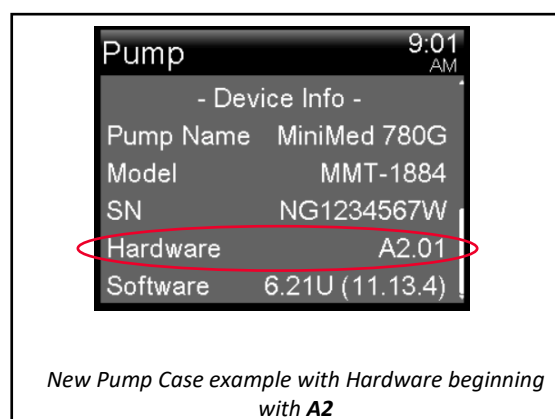
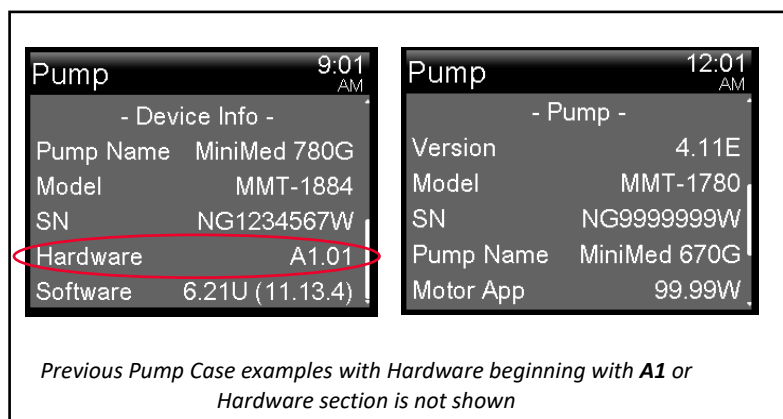


MiniMed™ 780G

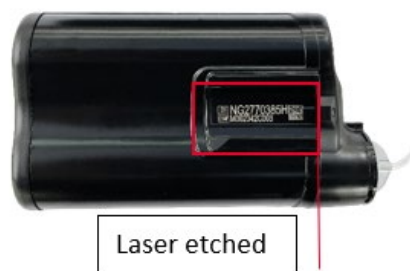


MiniMed™ 770G, MiniMed™ 740G, MiniMed™ 720G,  
MiniMed™ 700

- On the Pump screen, scroll down to check the **Hardware** version. If you have a new pump case, the **Hardware** version will begin with **A2**. If you have a previous case pump, the **Hardware** version either will not appear on the screen or shows **A1**.



- Another way to identify the new pump case is to look at the serial number on the outside of the pump. The serial number is located on the back of the pump underneath the belt clip. The serial number on the new pump case is laser etched onto the back of the pump whereas the serial number is on a silver sticker on the previous case pump.



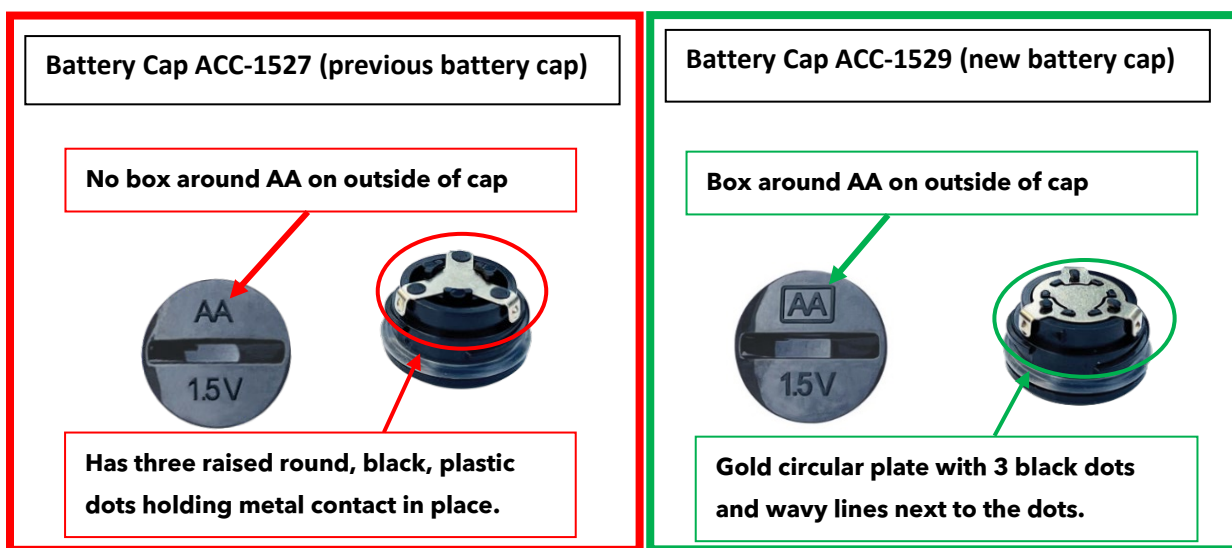
Previous pump case (left) and new pump case (right)

Pumps with **Hardware** version beginning with **A2** or having a **laser etched** serial number are not affected, these pumps must not use battery cap model number ACC-1529.

In case your pump has the **previous case design**, please contact Medtronic by calling our Helpline at 0800 633 333 for support where you will be able to request the **new battery cap (model ACC-1529)**.

Once you receive it, carefully follow the instructions below to replace the battery cap by following the steps below.

1. Gather your **previous case** insulin pump and **all** battery caps in your possession.
  - a. Only replace the battery cap on your **previous case pump**. If you have a **new case pump**, do not replace the cap on it.
2. Before you begin, make sure you have a new battery available; do not remove the battery cap unless you have a new battery available.
3. Look at the bottom and top of each battery cap and identify which battery cap(s) is the new cap (model number ACC-1529) for your **previous case pump** and which is the previous battery cap(s) (model number ACC-1527) using the pictures below:



4. Discard all previous battery caps, model number ACC-1527 for the previous case pump. There is no need to return anything to Medtronic.
5. Install the new battery cap (model number ACC-1529) onto your **previous case pump**.

## Issue Description:

The previous battery cap (model ACC-1527), used on previous case insulin pumps, has a contact issue that can potentially result in an incomplete battery connection, leading to no power source to the pump. When the pump detects no power source, an "Insert battery" alarm will occur, and **insulin delivery will immediately stop**. After 10 minutes, the alarm sound will increase to a siren, and the **pump will turn off**.

If the pump stops delivery of insulin due to power loss, this could lead to varying degrees of high blood sugar, including diabetic ketoacidosis (DKA). Serious injuries have been reported with the use of the MiniMed™ 600 series and MiniMed™ 700 series previous pump case insulin pumps associated with the damaged cap, but not all have been directly correlated to this issue based on review with independent clinical experts. Damaged battery cap contacts could potentially lead to those events explained above. Please notify Medtronic of any adverse events, if

the metal contact on your battery cap is damaged, or other problems associated with your use of this product by calling our Helpline 0800 633 333.

Your safety is our top priority, and we appreciate your time and attention in reading this important notification. We apologize for the inconvenience. If you have any questions, please contact us at our Helpline at 0800 633 333.

Sincerely,

Medtronic (Schweiz) AG